

System Requirements

Installation of the Grazer software package requires the following software and hardware:

Server Installation -

Microsoft (MS) 2000 Server (SP4) or MS Server 2003 R2 (SP2) - includes Small Business Edition

Workstation Installation -

MS Windows 2000 Professional (SP4) or MS Windows XP Professional (SP2)

- Intel Pentium IV processor (or faster)
- 256 Megabytes (Mb) of RAM (minimum)
512mb of RAM or more (recommended)
- 64mb Graphics Card
- 5Gb of free hard disk space for a full installation. Extra space required for graphic screens depending on size of project
- CD/DVD Rom or USB Port
(for installation only)
- Grazer can be installed on a stand alone PC or server with workstations linked via shortcut to Grazer Navigator
- If remote access to your Grazer project is required, Citrix or Terminal Services will need to be installed and configured.



Head Office
69 Henley Beach Road,
Mile End,
South Australia 5031
T: (08) 8351 9004
F: (08) 8351 9005

Australia-wide Support

sales@grazer.com.au

www.grazer.com.au

GL-0907c



Grazer®
Graphical Information Management


The Grazer Link



**Let Grazer
provide you with the
graphical link
for your operational
and maintenance data**

Adelaide - Sydney - Melbourne


Grazer has revolutionised a process to graphically manage building information

 Grazer is a specialised Australian software company providing solutions for efficient graphical management of assets and critical infrastructure.

Why Grazer?

Grazer provides a “Graphical Organizer” installed under licence, which supplies a graphical dimension to manage all information associated with significant assets and critical infrastructure.

Grazer Products

	Grazer Navigator	Grazer Manager	Grazer Professional
Drawings	Yes	Yes	Yes
O & M Manuals	Yes	Yes	Yes
Asset Photos	Yes	Yes	Yes
Essential Services Provisional Maintenance	No	Yes	Yes
Scheduling & Tracking of Plant Maintenance	No	Yes	Yes
Interfacing with other FM platforms	No	No	Yes
Financial Reporting	No	No	Yes
Work Order Generation	No	No	Yes

Grazer software is graphically based and offers three software packages in order to effectively and efficiently manage information for any type of facility. It is versatile and is tailored to suit individual client's needs. Grazer offers the unique ability to “Drill Down” to various levels in order to retrieve data, images and information from other directories through data mining.

All relevant information regarding primary plant or equipment is graphically linked allowing user's to view relevant data via 'Hotspots'. Hotspots incorporate manufacturer's technical data, operation and maintenance manuals, commissioning, test reports, schematics, condition audits, as well as plant and equipment photos.

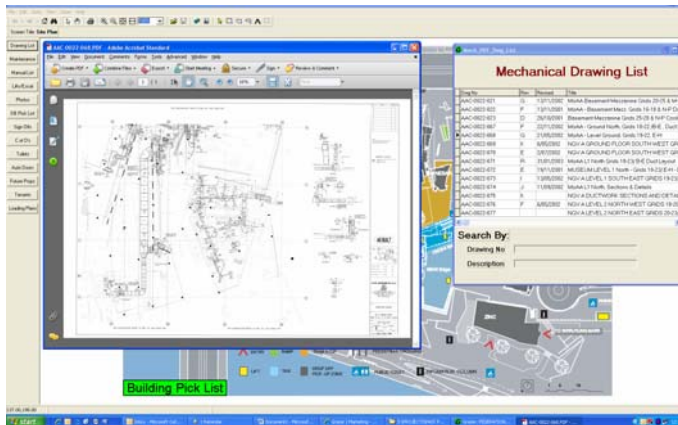
Let Grazer make your job easier.....

Building Information Modelling Made Easy

Grazer offers you an intuitive software package that will graphically display your building model with operational data attached to every feature of the buildings design. Grazer utilises the “As Installed” drawings in order to graphically illustrate the infrastructure of your building.

Grazer Manager Overview

- Enables efficient asset management & maintenance for any business operation
- Provides a search engine to locate specific assets, locations, equipment & associated information
- Ability to graphically identify all equipment & significant assets within the site using a 'linked' hotspot
- Software application installed under licence
- Provides a graphical interface with an intuitive method of accessing critical information
- Information retrieved via digital images & menu options



Example of Grazer at work as a Graphical Interactive Data Manager

Who will Benefit from Grazer?

- Facility Managers
- Building Owners
- Maintenance Personnel
- Building Contractors
- Consulting Engineers
- Project Managers

Let Grazer scope your next project

Grazer can graphically organise your services, including:

Electrical ▯ **Mechanical** ▯ **Fire** ▯ **Security**
Hydraulics ▯ **Lifts** ▯ **Landscape**

In order for Grazer to scope your next project, please provide us with the following:

- Asset Register
- Quantity of Drawings (per service)
- Quantity of Operation & Maintenance manuals
- Any interface requirements (eg SAP, BEIMS etc)

Call us now for a NO OBLIGATION quote

3 year finance available to approved clients



Additional Grazer Options

- Essential Services Preventative Maintenance Schedule
- Defect recording and reporting
- Hazardous Goods Register (eg Asbestos & Flammable Goods)
- Audit for missing equipment data
- Utilisation of touch screen technology
- Ongoing Training and Support
- Large Format Scanning (A0)
- OH&S and risk management